

PTC HEATING ELEMENT B46-148-4

Description

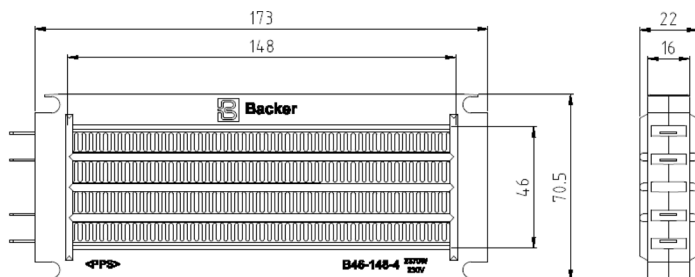
This PTC ceramic heater is designed for the heating of forced air and can be incorporated in a variety of heating appliances and systems.

The PTC technology offers many advantages compared to conventional resistance heaters. E.g. the self regulating temperature control and automatic temperature limiting effect offers increased safety and eliminates the need of extra thermal protection.

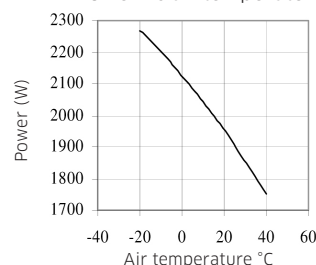


Technical specification

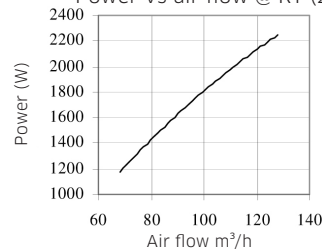
Article no	3050231301	
Material	Ceramic:	BaTiO ₃
	Fin:	Aluminium
	Adhesive, coating:	Silikon
	Frame:	PPS R7
Rated voltage	230Vac ± 15%	
Rated power	1900W ± 10% @ 108m ³ /h, 25°C	
I _{inrush}	< 36A	
T _{curie}	220 ± 7°C	
Voltage resistance	360 Vac/1 min	
R25	22-110 Ω @ 25°C	



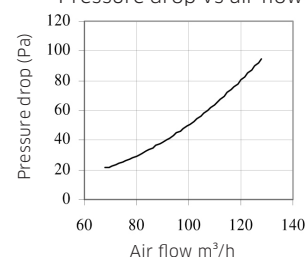
Power vs air temperature @ 108m³/h



Power vs air flow @ RT (25°C)



Pressure drop vs air flow @ RT (25°C)



PTC Elements

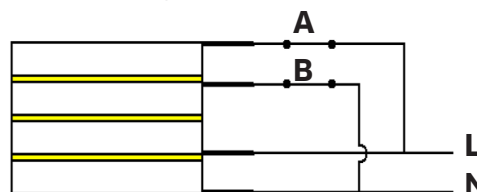
BENEFITS

- Rapid heating
- Heating power controlled by the air flow
- Compact construction
- Large heat transferring surface
- Uniform heating without power variation
- Economic; less wiring needed
- Long Life

FIELDS OF APPLICATION

- Heat systems for vehicles
- Fan heaters
- Tumble dryers
- Dehumidifiers
- Cabinet heaters
- Hot air curtains
- Hand dryers

Connection diagram:



Alternative power output of the element when connected to a power supply:

- | | |
|--------------------|------------|
| A closed, B closed | 1/1 power |
| A closed, B open | ~1/3 power |
| A open, B open | ~1/3 power |
| A open, B closed | ~2/3 power |