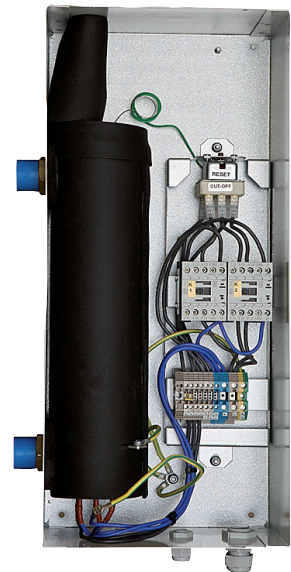
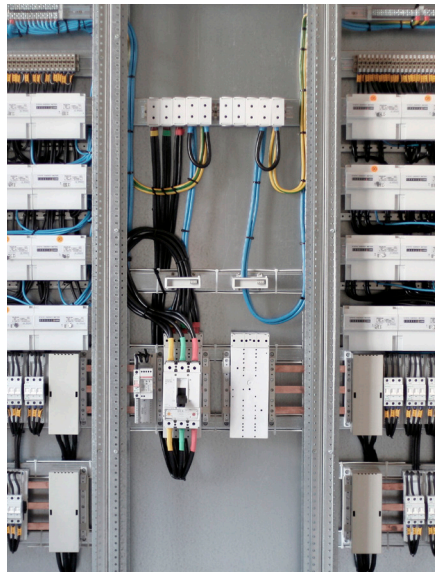
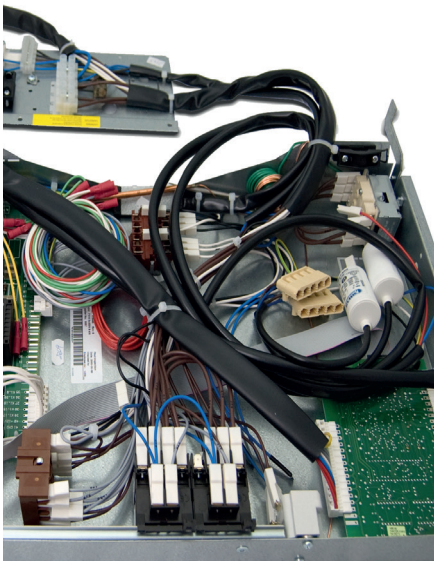
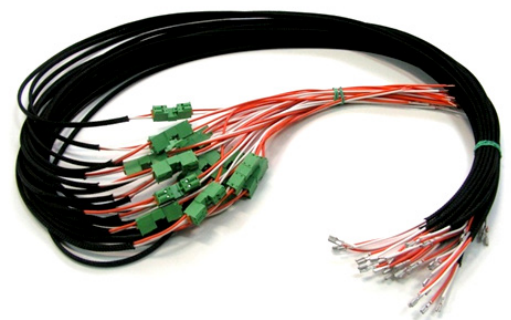


# CABLES

Backer provides a wide range of cable sets according to customer specification. They are ready to install by connecting them to PCB's (printed circuit boards, terminal blocks, different types of housing etc).



Material	Wire core: coppEr, tinned copper. Insulation: Regular PVC. Silicone and glass fibre - resistance for high temperature, up to 350°C. Teflon - high mechanical resistance. Shielded cables Terminals: Receptacles tabs, ring tonques, pins (brass, tinned brass, steel)	Assembly	Crimping on cables up to 75 mm <sup>2</sup> Ultrasound welding on cables up to 25 mm <sup>2</sup> Low pressure injection moulding in Macromelt technology.
Dimension	Single, Multicore and Hybrid cables. Single wire up to 75 mm <sup>2</sup>	Control/quality	The cables are fulfilling standards e.g. UL on customer demand Cross section analyse Pull force and crimp high measurement/control Electrical tests
Fields of application	Control panels, cabinets, drives Heating and cooling equipment (heat pumps, dryers, water heaters, radiators, refrigerators) Machines, cranes, production processes Engines power supply, inverters		



Example of product design and connections/assembly