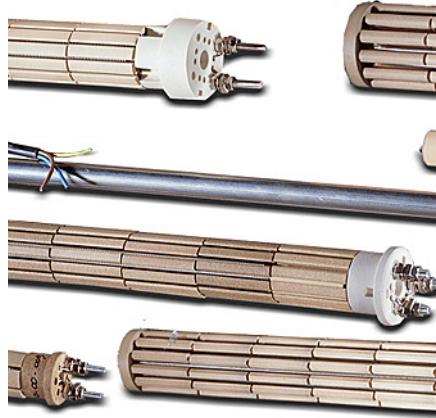
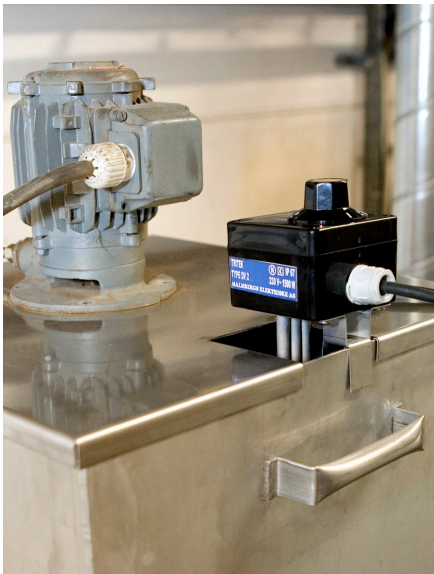
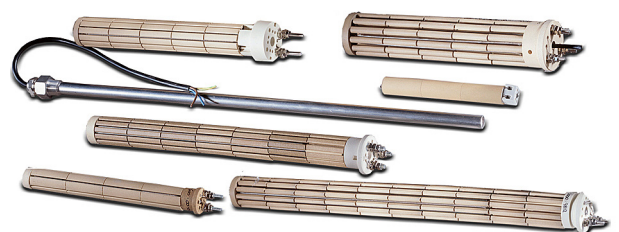


# CERAMIC ELEMENTS

Ceramic elements are used for heating fluids in boilers, water heaters and tanks; and for heating air/gas in ovens Etc. The heater is often mounted onto a welded or assembled tube which makes it possible to exchange the element without emptying the container.



Type of heating	Indirect - liquid Direct - air	Connection	M5 Cable
Material	Steatite	Others	Round Flat
Dimension	Ø 6.5 mm, 8.3 mm, 10 mm, 11.5 mm, 12.5 mm Ø 15.8 mm, 20 mm, 22 mm, 26 mm, 31 mm Ø 35 mm, 36 mm, 39 mm, 46 mm, 57 mm		
Fields of application	Industrial baths Water heaters Boilers Oil pre-heaters Air pre-heaters Hot blast furnaces, etc.		



Example of product design