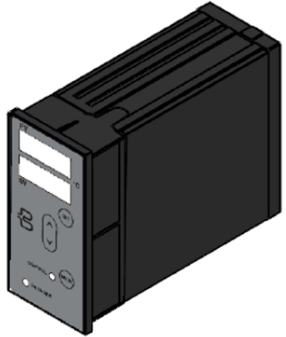


Backer IoT Smart Temperature Controller HRDc Getting Started



Network Connection

To access all but the most basic features of the controller an RJ45 Ethernet connection is required for the device. The HRDi device will connect to any standard Ethernet router (or via a switch) and will attempt self-configure using standard DHCP services (see figure 2b). Temporary or independent access to a the HRDi from a mobile device can also be achieved using an inexpensive WiFi extender (see figure 2b) such as the Netgear EX2700, which can be configured as a router and access point. It is not mandatory to have internet access if this is not available from the router however only limited functionality will be available from a local mobile device.

(e.g. see http://www.downloads.netgear.com/files/GDC/EX2700/EX2700_UM_EN.pdf)

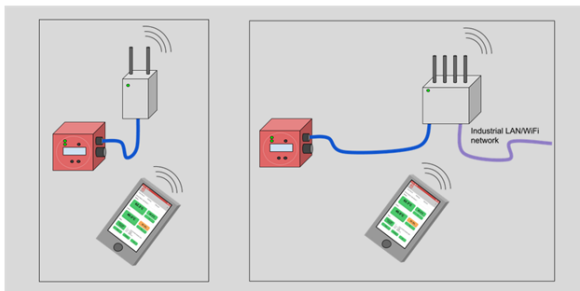


Figure 2a Left - Temporary commissioning or dedicated mini-LAN connection method.

Figure 2b Right - Normal Industrial LAN connection.

Configuring the Controller

Once an IP connection to the HRDc has been established you can access it using the Backer IoT mobile application to provision and configure your device:

- Download & install the Backer IoT device application for any Android phone or tablet by accessing the following URL from your mobile device's web browser:

<https://iot-vs1.nibe.se/media/hr-iot-app.apk>

Ignore the security warning and press on the Settings option that may be displayed and switch on "allow from this source"

- Start the IoT application (Backer logo branded) and create a new user using the register option (or sign in with an existing account if you already have one). Once you have signed in you will be able to see your HRDc or other Backer devices available on the local network.

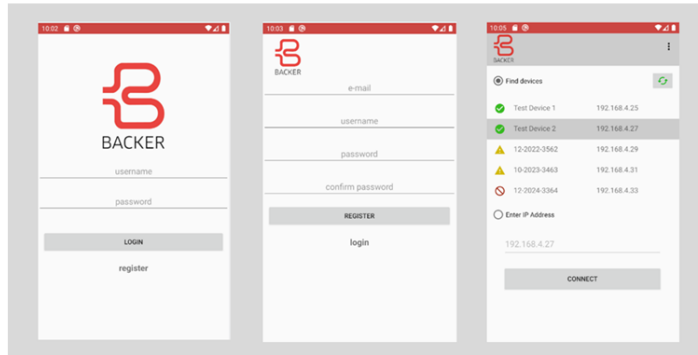


Figure 3. Signing up and into your account

Initially your device will be un-provisioned and is listed with a yellow triangle. Your device must be provisioned to secure access to the user interfaces via IP. Provisioning will also bind the HRDc to your Devman account. Provision requires the following:

The HRDc devices 5 digit PIN (this is printed on the label attached to the side of the controller).

It is often useful initially to know the HRDi's device ID to identify it amongst any other Backer IoT devices that may be connected to your LAN (This is 9 digit number provided on your device's paper work)

Note: You must have logged into the Backer IoT Mobile application while your mobile had internet access within the last 5 days to ensure you have a valid provisioning certificate at the time of provisioning a device.

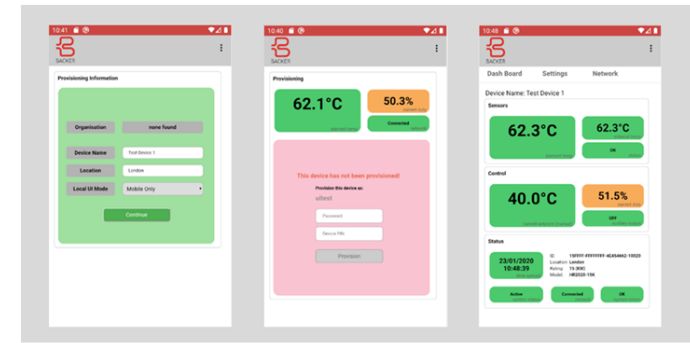


Figure 4. Provisioning your HRDc device

- Once your PIN and password has been accepted you can give the device a memorable name and location to identify your devices more easily in the future which is also reflected in the *Devman* web portal.
- Once provisioned you will be presented with the dashboard screen and access to settings that your account type allows. Self-registered users that do not share devices within an organisation default to having full access to the device's configuration pages. **Demonstrator devices should not require any changes to the preconfigured hardware settings.**
- All subsequent connections to the device will go directly to the dashboard page after successful provisioning. To allow other users to access devices you have provisioned with a personal account you will need to contact the support team to convert your account to a team member account.

Configuring the Controller (Mobile & LAN)

HRDi devices are supplied with a preset hardware configuration appropriate for its internal element configuration (e.g. 3 wire/4wire 440/340v elements etc.). For re-configured devices the advanced settings section includes further details.

Controller parameters that will typically be adjusted by users can be found on the Controller Settings screen:

